

# **Dell 1800FP Power Supply Installation Instructions**

The Dell UltraSharp 1800FP was designed for a wide variety of users ranging from the home to corporate or financial trading environments. It utilizes an 18.1" Active Matrix TFT LCD that displays brilliant images of text and graphics with a maximum resolution up to 1280 x 1024 pixels.

**Common Problems associated with this model:**

1. NO POWER.
2. No Indicator lights are green on front panel.

**Resolving these issues (Part Replacement):**

1. Replace the power supply P/N 6870T445D10.

**This Power Supply works on the following models:**

BRAND	MODEL	REMARK
DELL	1800FP	18.1" LCD MONITOR

**Disassembly Instructions:**

1. Place monitor face down on flat surface using a soft towel to avoid scratching the LCD screen.
2. Use a cup or other small container to hold the screws as they are removed.
3. It is recommended, not required, that you purchase a static wrist guard or other anti-static guard. These can be purchased at a nominal cost at a computer hardware store or electronics repair shop.
4. Make sure the unit is unplugged and the power supply/plug is removed from the unit.
5. **Important:** Do not apply force onto the LCD screen at anytime, this will cause permanent damage.
6. This manual is provided as a reference guide. If you do not understand disassembly process or you do not feel that you are competent to perform the repair, then you should have the repair completed by a professional repair technician.

**Disclaimer:**

Norris Parts provides this manual for reference only. Norris Parts is not responsible for any actions taken by the user of this manual. Norris Parts is not responsible for damage resulting from the repair or use of any equipment referenced in this manual.

## Disassembly



**Step 1:**

**Remove the two (2) screws from the top of the base.**



**Step 2:**

**Remove the base.**



**Step 3:**

**Remove the six (6) screws from the back cover.**



**Step 4:**

**Stick a flat screw driver between the back cover and the front bezel.**



**Step 5:**

**Remove the back cover.**



**Step 6:**

**Remove the back cover.**



**Step 7:**

**Remove the six (6) screws from the metal cover.**



**Step 8:**

**Remove the metal cover.**



**Step 9:**

**Unplug connector from the power supply.**



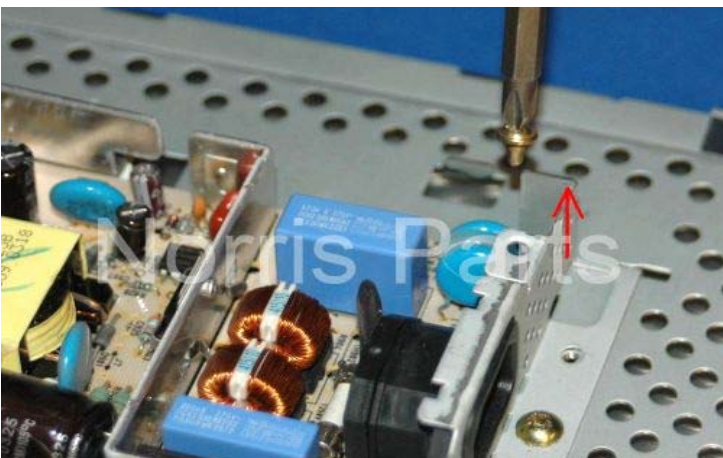
**Step 10:**

**Remove the two (2) screws from the power supply.**



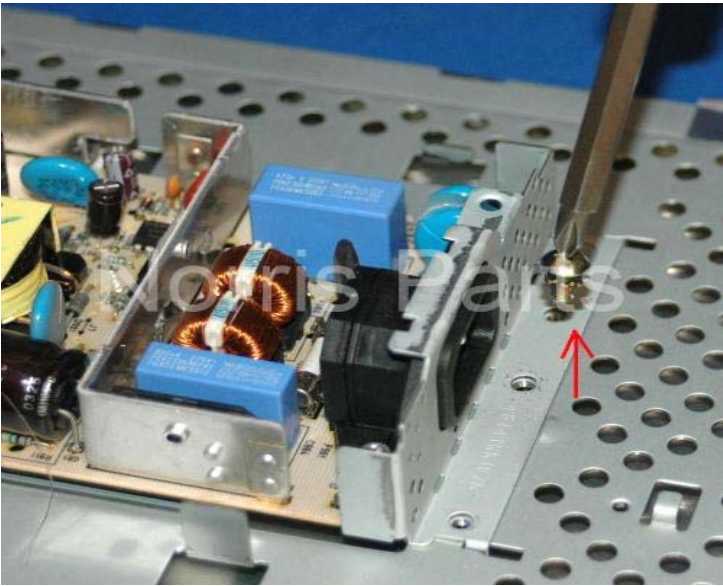
**Step 11:**

**Remove the screw from the power supply.**



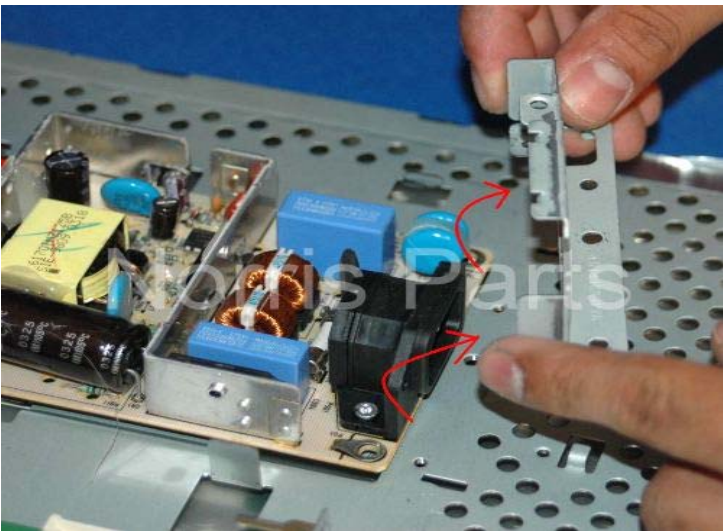
**Step 12:**

**Remove the screw from the power supply.**



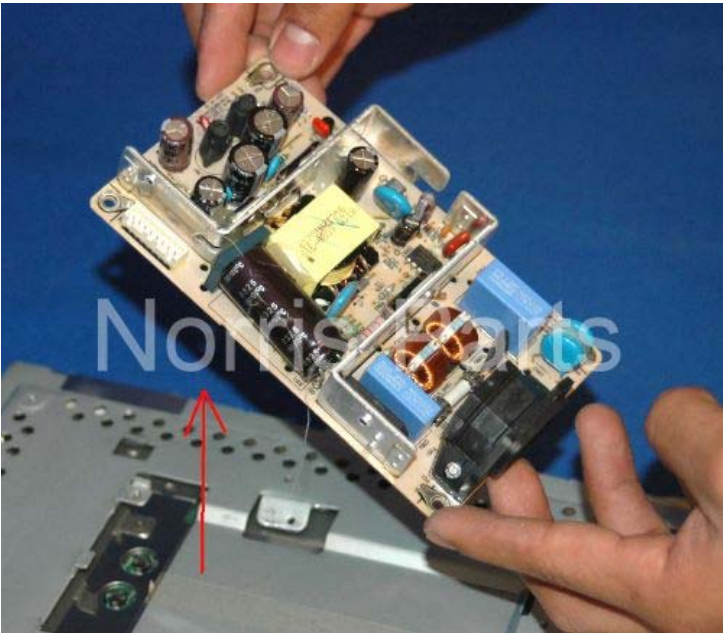
**Step 13:**

**Remove the screw from the front of the power supply.**



**Step 14:**

**Remove the front of the power supply.**

**Step 15:**

**Remove the power supply.**

**Step 16 – Reassembly**

**Inspect new part ensuring that any packing materials or tape are removed.**

**Follow the directions in reverse to complete the installation of the replacement part. Make sure that all connectors are plugged in. Make sure that you replace all screws into their assemblies.**